

HEAD AND SPINAL CORD INJURY WAIVER

Version 2.0 (7/1/2022)

Introduction

Head and Spinal Cord Injury (HASCI) Waiver

- Traumatic brain injury
 - Spinal cord injury
 - Similar disability
-

Services offered in the HASCI Waiver are meant to prevent and/or delay institutionalization of the participants



Administrative Authority

South Carolina Department of Health and Human Services (SCDHHS) has administrative authority for all the state Home and Community Based Services (HCBS) Waiver programs, including the HASCI Waiver.

South Carolina Department of Disabilities and Special Needs (SCDDSN) performs waiver operations under a formal Administrative Contract with SCDHHS.



Here to help

[This Photo](#) by Unknown Author is licensed under [CC BY](#)

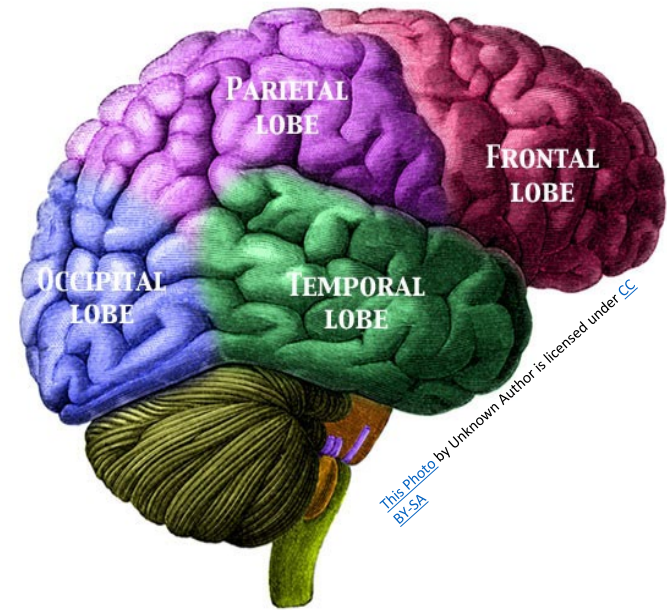
Population Served



- Traumatic Brain Injury
- Spinal Cord Injury
- Similar Disability

Traumatic Brain Injury (TBI)

- ❑ An injury to the skull or brain, not of a degenerative or congenital nature, but caused by an external force.
- ❑ The injury may produce a diminished or altered state of consciousness resulting in impairment in cognitive abilities or physical functioning, as well as behavioral and/or emotional functioning.



It does not include stroke or aneurysm.



Spinal Cord Injury (SCI)



- ❑ An acute traumatic lesion of neural elements in the spinal canal, resulting in any degree of deficit in sensory, motor, and life functions.
- ❑ The deficit may be temporary or permanent.

Similar Disability (SD)

- A condition similar to TBI or SCI, but not associated with the process of a progressive degenerative illness or dementia, or a neurological disorder related to aging.



Functional Limitations

Self-care

Communication

Learning

Mobility

Self-direction

Independent
Living

Economic Self-
Sufficiency

Requirements to Participate

In order to become enrolled in the HASCI Waiver, a participant must meet specific requirements and other conditions. A potential participant must:

- be allocated a HASCI Waiver participant slot.
- be given “Freedom of Choice” to receive services in his/her home and community instead of in an institutional placement.
- be Medicaid enrolled or be eligible to receive South Carolina Medicaid.

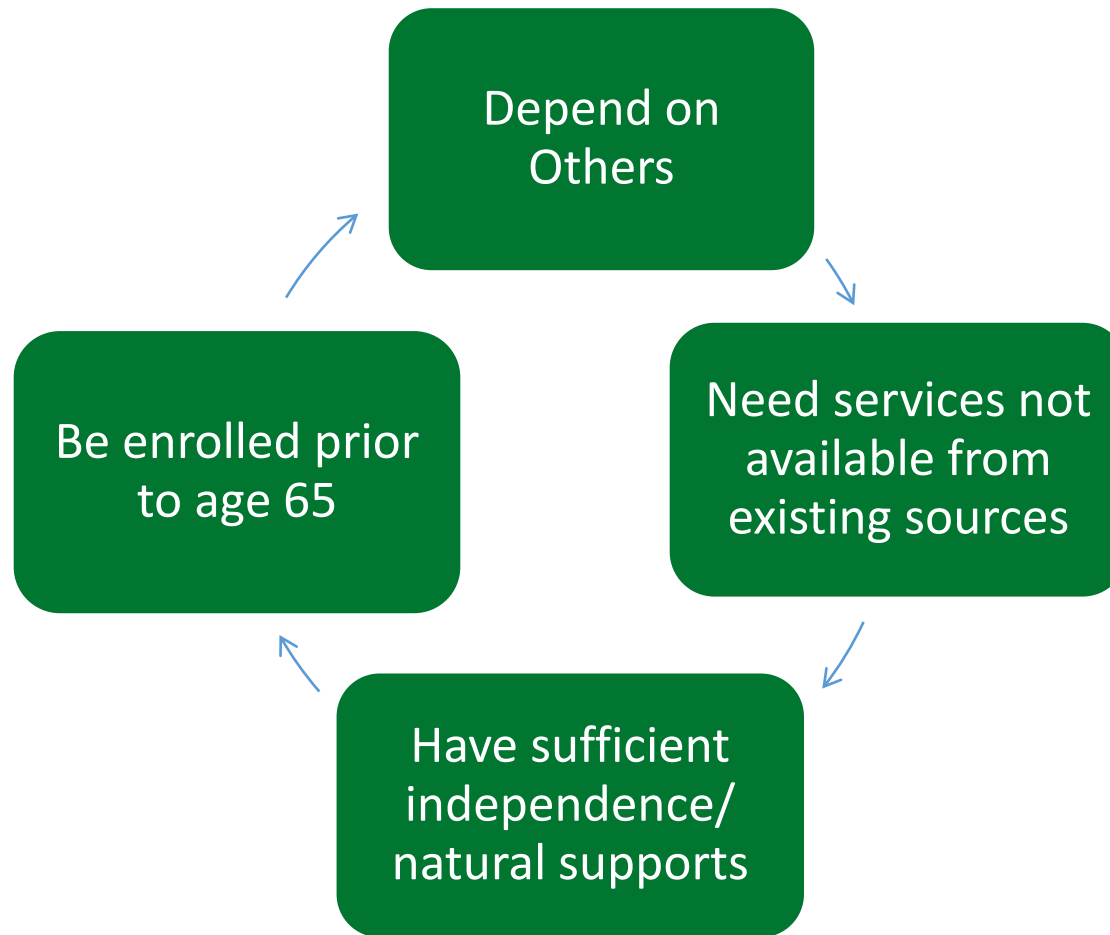
Level of Care

A potential HASCI Waiver participant must:

meet Level of Care (LOC) criteria for a Nursing Facility (NF) or an Intermediate Care Facility for Individuals with Intellectual Disability (ICF/IID).



Potential HASCI Waiver Participant



Enrollment



[This Photo](#) by Unknown Author is licensed under [CC BY-NC-ND](#)

After all requirements are met, the potential participant can be enrolled in the HASCI Waiver.

Upon enrollment, qualified providers chosen by the participant may be authorized by the waiver case manager to render needed services that are specified on the participant's Support Plan and included in his or her approved HASCI Waiver budget.

Overview of Services

Attendant Care/Personal Assistance (AC/PA)

Direct assistance with personal care and activities of daily living and/or supervision/cueing to assure health and safety. Self-Directed Attendant Care (UAP Option) allows a HASCI Waiver participant to recruit, employ, train, supervise, and fire his or her own attendant(s). If the participant is not capable of self-direction, a Responsible Party can be designated to perform these functions on behalf of the participant.

- limited to 49 hours per week (see HASCI Waiver Manual for time-limited exception)
- if both AC/PA and Medicaid Waiver Nursing are received by a participant, the total hours for the combination of the two services cannot exceed 10 hours per day or 70 hours per week
- there is an option for Self-Directed Attendant Care

Behavior Support

Services to assist people who experience challenging behaviors to teach new behaviors and better ways to communicate to improve their quality of life

Overview of Services (Cont'd)

Career Preparation

Services aimed at preparing individuals for competitive employment. These services can include such concepts as attendance, task completion, problem solving and interpersonal relations and safety

Day Activity

Activities and services provided to assist with acquisition, retention, or improvement of self-help, socialization, and adaptive skills in a licensed day program

Day Activity is designed to assist in community integration

Employment Services

Intensive, on-going supports for participants for whom competitive employment at or above minimum wage is unlikely absent the provision of supports

Overview of Services (Cont'd)

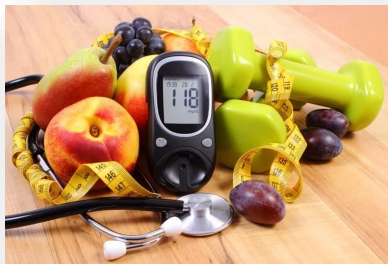
Environmental Modifications

Physical adaptations to the participant's private home which are necessary to ensure health and safety or enable more independence of the participant

- subject to HASCI Division *Guidance for Environmental and Private Vehicle Modifications*
- limited to \$20,000 per modification

Health Education for Consumer-Directed Care

Instruction by a registered nurse to assist a participant to monitor their own health and manage personal care provided by another person; a family member or other representative may be designated if a person is not capable of self-management



Overview of Services (Cont'd)

Incontinence Supplies (IS)

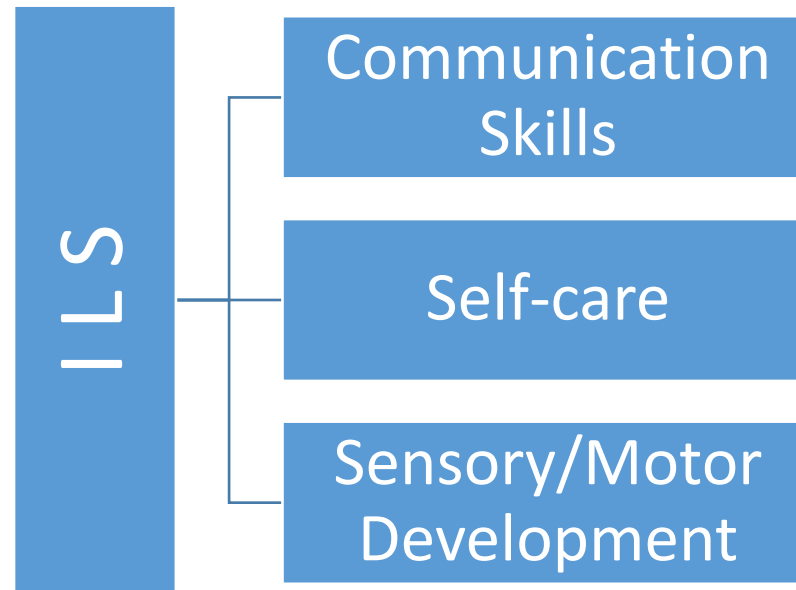
Diapers, briefs (protective underwear), incontinence pads (liners), underpads, wipes, and gloves needed by an adult age 21 years or older who is incontinent of bladder and/or bowel; it is an Extended State Plan service for additional items above limits of Medicaid State Plan

- *Physician Certification of Incontinence* must be completed initially and annually thereafter and kept on file by the IS provider
- Participant must be assessed using the SCDDSN *Incontinence Supply Assessment* form to determine amount and frequency of items to be authorized
- *After limits of IS for adults through Medicaid State Plan are first accessed,* the following IS can be funded through HASCI Waiver:
 - Diapers up to 192 diapers a month
 - Briefs up to 160 briefs a month
 - Incontinence Pads up to 260 pads a month
 - Under Pads up to 2 cases a month
 - Wipes up to 8 boxes a month
 - Gloves up to 4 boxes a month

Overview of Services (Cont'd)

Independent Living Skills (ILS)

Services that develop, maintain and improve the community-living skills of a waiver participant



Overview of Services (Cont'd)

Medicaid Waiver Nursing (MWN)

Services for adults age 21 years or older within scope of the South Carolina Nurse Practice Act provided by a RN or LPN

- *Physician's Order for Nursing Services* must be completed
- number of hours approved must be determined through the SCDDSN Nursing Review
- if both Medicaid Waiver Nursing and AC/PA are received by a participant, the total hours for the combination of the two services cannot exceed 10 hours per day or 70 hours per week

Occupational Therapy (OT)

Treatment for adults age 21 years and older to restore or improve fine motor functioning

- participant must first exhaust OT benefits for adults funded by Medicaid State Plan through Out-Patient Hospital Services, Physician's Services, and Home Health Services
- participant must demonstrate functional improvement to continue treatment

Overview of Services (Cont'd)

Peer Guidance for Consumer-Directed Care

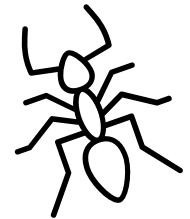
Information, advice, and encouragement provided by a peer to a participant to recruit, train, and supervise their own caregivers

Personal Emergency Response System (PERS)

Provides an electronic device that enables participants at high risk of institutionalization to secure help in an emergency. It includes a one-time installation of the device and monthly monitoring

Pest Control Treatment & Pest Control Bed Bugs

Pest Control Treatment and Pest Control Bed Bugs aid in maintaining an environment free of insects to enhance safety, sanitation, and cleanliness of the participant's home or residence



Physical Therapy (PT)

Treatment for adults age 21 years and older to improve or compensate for mobility and movement dysfunction and related functional impairments

Overview of Services (Cont'd)

Private Vehicle Modifications

Modifications to a privately owned vehicle driven by or routinely used to transport a HASCI Waiver participant

- subject to HASCI Division *Guidance for Environmental and Private Vehicle Modification*
- vehicle must be no more than 5 years old, have no more than 100,000 odometer miles, and be in good mechanical and body condition
- limited to \$30,000 per vehicle

Private Vehicle Modification Assessments/Consultations

May be provided to determine specific modifications or equipment needed, any follow-up inspection after modifications are completed, and training in use of equipment

Psychological Services

Treatment to address the affective, cognitive, and substance abuse issues of adults age 21 years and older

Overview of Services (Cont'd)

Residential Habilitation

Care, supervision and skills training provided to a person in a non-institutional setting

Services furnished as Residential Habilitation must support the person to live as independently as possible in the most integrated setting

Respite Care

Short-term care and/or supervision in the absence of people normally providing care/supervision; it may be provided on an hourly basis in a private home or other community setting (group home or residential program) or on a daily basis in an institutional setting (hospital, NF, or ICF/IID)

- *For further information, please refer to the waiver manual or your Supervisor*

Speech and Hearing Services

Speech Therapy (ST), audiology services, and augmentative communication services for adults age 21 years and older

Overview of Services (Cont'd)

Specialized Medical Equipment, Supplies and Assistive Technology (AT)

Specialized medical supplies and equipment and AT devices to better perform activities of daily living.

Equipment and Assistive Technology Assessment/Consultation

May be provided to determine specific equipment and assistive technology needs related to the person's disability for which equipment and assistive technology will assist the participant to function more independently. The Assessment/Consultation will determine the scope of the work and specifications for the recommended Equipment/Assistive Technology.



Overview of Services (Cont'd)

Waiver Case Management

Services that assist participants in gaining access to needed waiver and other State Plan services, as well as medical, social, education and other services, regardless of the funding sources for the services to which access is gained

Transitional Waiver Case Management

Waiver Case Management is a service that can only be provided to participants who are residing in a community setting. However, as an exception, Transitional Waiver Case Management may be provided to a participant transitioning to a community setting following an institutional stay (e.g., nursing home, in-patient psychiatric hospital, ICF/IID)



HASCI Waiver Manual

Consult the HASCI Waiver Manual, Chapter 6, *Services* for the official definition of each service and the following information:

- the service unit
- service limits and other restrictions
- types of providers
- instructions for arranging and authorizing the service
- information about billing
- monitorship requirements
- procedures for denial, reduction, suspension, and termination of services

The HASCI Waiver Manual is found on SCDDSN's website



